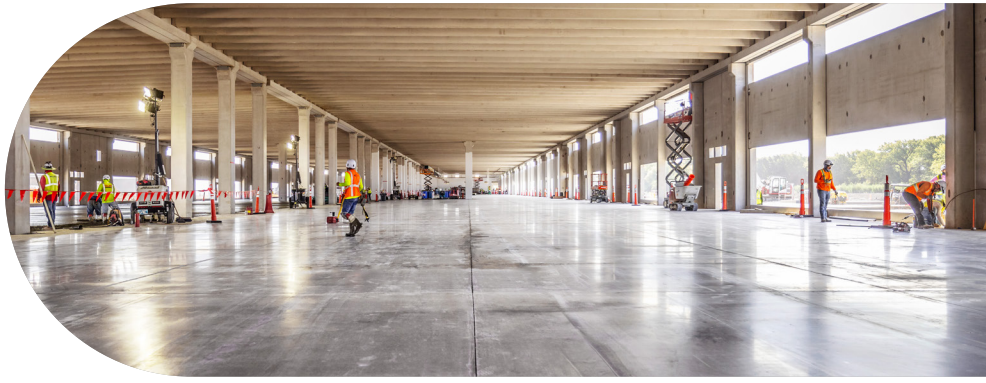


TOP 10

Reasons to Choose Compass Datacenters



10

Room to Groove.

Unlike project-by-project builds, our large-scale campuses are designed to evolve with your business—expand and refresh when you need, how you need.

[Let's build your future >](#)

09

One Design, Any Location.

Standardized parts. A consistent playbook. Our fully fungible infrastructure adapts to any topography, ensuring reliability and efficiency no matter the location.

[See how we make it work >](#)

08

Safety First, Always.

Our Compass Cares and Frontliner programs builds a safety-first culture, protecting people and projects every step of the way.

[Explore our commitment >](#)

07

Greener by Design.

From HVO fuel to reflective roofing, sustainability is built into our DNA. Less waste, lower emissions, smarter operations.

[See how >](#)

06

Smarter, Faster, Cheaper.

74% of our data center is prefabricated, cutting costs, slashing timelines and eliminating inefficiencies found in stick-built construction.

[Read about our approach >](#)

05

Supply Chain, Supercharged.

A tight-knit supply chain means price certainty, reduced risk and faster innovation. No delays. No surprises. Just results.

[Meet our partners. >](#)

04

Upgrades Without the Headaches.

Our kit-of-parts design makes upgrades effortless—whatever the need, whenever the time. Growth has never been easier.

[Read about modularity >](#)

03

Innovation That Works.

From hybrid liquid-air cooling to predictive maintenance, we don't just innovate—we redefine what's possible.

[See for yourself >](#)

02

The 100-Year Campus.

Built for today, flexible for tomorrow. Dedicated campuses with long-term capacity, scalability and effortless upgrades.

[Tell me more >](#)



And the #1 reason to choose Compass

We're Your Partner for the Long Haul.

We don't just build data centers—we build lasting partnerships. With a decade-plus track record of delivering scalable, future-ready solutions, Compass is the trusted choice for long-term success.

[Reach out](#)

